

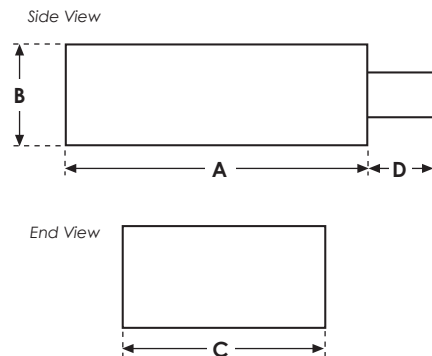
S10X Series

Spectra Ten-X Area Luminaire, 150-1000W HID

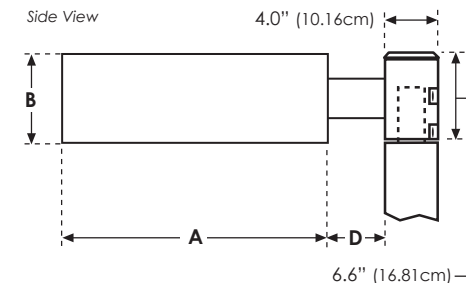
Type:	Job:	Approvals:					
Catalog Number:							
Series/Source-Wattage	Optics (Distribution)	Voltage	Mounting	Options (Factory Installed)	Finish	Accessories (Field Installed)	Date: Page 1 of 6

Overall Dimensions *For Reference Only*

S10X
Arm Mount (S)
Surface Arm Mount to Square Pole (Standard)



S10X
Arm Mount with Mastfitter (M)



	A	B	C	D
150-250W	21.0"	6.6"	15.0"	7.0"
Small Housing	(53.34cm)	(16.81cm)	(38.10cm)	(17.78cm)
400W	27.0"	6.6"	20.0"	7.0"
Medium Housing	(68.58cm)	(16.81 cm)	(50.80cm)	(17.78cm)
1000W	31.0"	11.4"	24.0"	7.0"
Large Housing	(78.74cm)	(28.87cm)	(60.96cm)	(17.78cm)

EPA (Effective Projected Area in Ft²)

	1 @ 90	2 @ 90	2 @ 180	3 @ 120	4 @ 90
Small Housing	1.6	2.3	3.2	3.3	3.9
Medium Housing	1.8	2.8	3.6	4.2	4.6
Large Housing	3.5	5.7	7.0	8.5	9.2

Weight

	Small Housing	Medium Housing	Large Housing
	35 lbs. (15.9 kgs)	57 lbs. (25.9 kgs)	93 lbs. (42.2 kgs)

Specifications

Housing

Formed aluminum housing. The sides and top shall be mechanically and chemically sealed to ensure a rain tight seal. Housing size varies from large to medium to small, dependent on wattage and reflector choice. Standard unit constructed to IP54.

Optic Assembly

Horizontal lamp, flat glass optics provide full cut-off illumination for roadway and parking area applications. IES Type II, Type III, Type IV, and Type V distributions are available. Reflectors shall be multi-faceted high purity anodized aluminum. Field-rotatable and exchangeable optics.

Lamp Access

The extruded aluminum lens frame swings down for easy lamp access. The door frame shall have a natural anodized finish with mitered corners. Opposing spring loaded latches shall provide tool-less lamp access. A one-piece extruded silicone gasket ensures a sealed enclosure.

Lens

The heat and impact resistant tempered glass lens is mechanically secured in the lens frame.

Socket

A porcelain, 4KV pulse rated, (5KV 1000W HPS models), grip-type mogul based socket shall be used to prevent lamp loosening and to maintain proper lamp positioning.

Ballast

The ballast assembly (field installed) shall include a heavy-duty unitized ballast tray with keyhole slots and quick disconnect plugs for easy installation and replacement. Ballast shall be high power factor with reliable starting down to -29°C (-20°F) for Metal Halide, -34°C (-30°F) for Pulse Start MH, -40°C (-40°F) for High Pressure Sodium. Crest factor does not exceed 1.8. Ballast has Class H, 180°C (356°F) rated insulation system.

Mounting

Standard surface mounting arm (field installed) shall be heavy gauge extruded aluminum, 7" long (11" long when fixtures are mounted at 90°). Threaded tension rods shall be used to bolt to 4" and larger straight square poles.

Finish

Standard finish shall be Textured Dark Bronze UltraClad polyester powder coating, 2.5 mil nominal thickness, electrostatically applied and oven cured for extreme durability. Other colors may be specified.

Listings

ETL/cETL listed to the UL standard, UL 1598, suitable for Wet Locations. The quality systems of this facility have been registered by UL to the ISO 9001 Series Standards.

Warranty / Terms and Conditions

Standard 5 Year Limited Warranty

The current Philips Wide-Lite Warranty may be found at www.wide-lite.com (keyword: warranty) as well as the current Standard Terms and Conditions of Sale (keyword: terms).

All sales of items in this catalogue shall be subject to the Philips Wide-Lite Standard Terms and Conditions of Sale current at the time of shipment. If you do not have a copy of the Philips Wide-Lite Warranty and Standard Terms, please contact the factory for same prior to ordering.








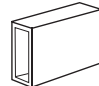

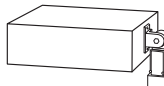
Some luminaires use fluorescent or high intensity discharge (HID) lamps that contain small amounts of mercury. Such lamps are labeled 'Contain Mercury' and/or with the symbol 'Hg'. Lamps that contain mercury must be disposed of in accordance with local requirements. Information regarding lamp recycle and disposal can be found at www.lamprecycle.org.

S10X Series

Spectra Ten-X Area Luminaire, 150-1000W HID

Type:	Job:	Page 2 of 6
-------	------	-------------



Series/Source-Wattage	Optics	Voltage	Mounting ¹
Metal Halide <input type="checkbox"/> S10XM-1000 Pulse Start Metal Halide <input type="checkbox"/> S10XP-150 <input type="checkbox"/> S10XP-250 <input type="checkbox"/> S10XP-320 <input type="checkbox"/> S10XP-400 <input type="checkbox"/> S10XP-750 <input type="checkbox"/> S10XP-875 <input type="checkbox"/> S10XP-1000  High Pressure Sodium <input type="checkbox"/> S10XS-150 <input type="checkbox"/> S10XS-250 <input type="checkbox"/> S10XS-400 <input type="checkbox"/> S10XS-750 <input type="checkbox"/> S10XS-1000	Reflector / Distribution <input type="checkbox"/> 2 Type II  <input type="checkbox"/> 3 Type III  <input type="checkbox"/> FT Forward Throw Type IV (4) with internal house side shield  <input type="checkbox"/> 5 Type V (Square) 	<input type="checkbox"/> 120 <input type="checkbox"/> 208 <input type="checkbox"/> 240 <input type="checkbox"/> 277 <input type="checkbox"/> 480 <input type="checkbox"/> QV Quad volt ballast. <i>Allows field selection of 120/208 /240/277 voltage. Certain options may require voltage selection as well.</i>	<input type="checkbox"/> S Surface arm mount to straight square pole (standard 7" arm)  7" arm suitable for single or twin mount only (1@90 or 2@180). RPA-S10 accessory is required for arm mounting to round pole. <input type="checkbox"/> S11 11" mounting arm Longer arm allows clearance for mounting multiple fixtures at 90°: 2@90, 3@90, or 4@90. <input type="checkbox"/> M Fixed mastfitter Allows mounting with standard arm to square pole equipped with 2-3/8" O.D. x 4-5/8" vertical tenon.  <input type="checkbox"/> MA2 Adjustable mastfitter Mounts to 2-3/8" O.D. x 4" vertical tenon. 

Options (Factory Installed)	Finish	Accessories (Ordered Separately)
<input type="checkbox"/> BL Bi-Level <input type="checkbox"/> CSR Hot Quartz Restrike <input type="checkbox"/> LQ Hot/Cold Quartz Restrike <input type="checkbox"/> LQ1 Separately Wired (120V) Quartz Restrike <input type="checkbox"/> F1 Single Fuse (120V / 277V) <input type="checkbox"/> F2 Double Fuse (208V / 240V / 480V) <input type="checkbox"/> TLR Twist-Lock Photocell Receptacle <input type="checkbox"/> TLR-PC120V Twist-Lock Receptacle with 120V Photocell <input type="checkbox"/> TLR-PC208V Twist-Lock Receptacle with 208V Photocell <input type="checkbox"/> TLR-PC240V Twist-Lock Receptacle with 240V Photocell <input type="checkbox"/> TLR-PC277V Twist-Lock Receptacle with 277V Photocell <input type="checkbox"/> HSS Factory installed external house side shield <input type="checkbox"/> AL-4-S10 Auxiliary polycarbonate lens <input type="checkbox"/> 50HZ 50 Hz ballast operation	<input type="checkbox"/> TSA Textured Satin Aluminum <input type="checkbox"/> TDB Textured Dark Bronze <input type="checkbox"/> TBK Textured Black <input type="checkbox"/> TWHT Textured White <input type="checkbox"/> TGR Textured Gray <input type="checkbox"/> TGN Textured Green <input type="checkbox"/> RAL(*) Special Tiger Drylac® powder coat finish (*) Specify RAL color number from RAL color chart (Consult factory.)	<input type="checkbox"/> F1-KIT Single Fuse Kit (120V / 277V) <input type="checkbox"/> F2-KIT Double Fuse Kit (208V / 240V / 480V) <input type="checkbox"/> RPA-S10 ² Round Pole Adapter <input type="checkbox"/> RPTA-190-S10 ³ Round Pole Tenon Adapter, 1@90 <input type="checkbox"/> RPTA-290-S10 ³ Round Pole Tenon Adapter, 2@90 <input type="checkbox"/> RPTA-2120-S10 ³ Round Pole Tenon Adapter, 2@120 <input type="checkbox"/> RPTA-2180-S10 ³ Round Pole Tenon Adapter, 2@180 <input type="checkbox"/> RPTA-390-S10 ³ Round Pole Tenon Adapter, 3@90 <input type="checkbox"/> RPTA-3120-S10 ³ Round Pole Tenon Adapter, 3@120 <input type="checkbox"/> RPTA-490-S10 ³ Round Pole Tenon Adapter, 4@90 <input type="checkbox"/> SPTA-190-S10 Square Pole Tenon Adapter, 1@90 <input type="checkbox"/> SPTA-290-S10 Square Pole Tenon Adapter, 2@90 <input type="checkbox"/> SPTA-2180-S10 Square Pole Tenon Adapter, 2@180 <input type="checkbox"/> SPTA-390-S10 Square Pole Tenon Adapter, 3@90 <input type="checkbox"/> SPTA-490-S10 Square Pole Tenon Adapter, 4@90 <input type="checkbox"/> SW-DT4 Wall Mounting Bracket

Notes

1) Refer to page 6 for Drill Template #4.

2) Required when fixture is arm mounted to 4" O.D. round pole. If round pole is equipped with pole top tenon, and RPTA (round pole tenon adapter) is used to allow arm mounting, an

RPA is required for each arm mounted fixture.

3) RPTA accessory also requires an RPA accessory for each fixture to be arm mounted.

Philips Wide-Lite reserves the right to change specifications and dimensions without notice. Lamp and electrical specifications / availability subject to change by manufacturer without notice. Please refer to detailed specification sheets for additional information and spec details.

1611 Clovis Barker Road • San Marcos, TX 78666 • Phone: 512.392.5821 • Fax: 512.753.1122 • www.wide-lite.com

© 2010 Philips Group. All rights reserved.

Bulletin No. WLSP0160G0711

PHILIPS
WideLite

S10X Series

Spectra Ten-X Area Luminaire, 150-1000W HID

Type:	Job:	Page 3 of 6
-------	------	-------------

Distribution Guide & Ballast Data ¹

Source ² Type	Catalog Number	Housing Size	Reflector Type	Lamp ³ Envelope	.ies File Name	Ballast ⁴ Type	ANSI Code	Line Current 120 / 208 / 240 / 277 / 480	Line Watts
MH	S10XM-1000	Large Large	3 FT (4)	BT56 ED/BT37	s10m1003.ies s10m1004.ies	CWA	M47 / H36	9.2 / 5.6 / 4.7 / 4.1 / 2.4	1080
PS	S10XP-150	Small Small Medium	2, 3 FT (4) 5	ED28 BT28 ED28	s10p15(*).ies s10p154.ies s10p155.ies	HX-HPF	M102 / M142	3.7 / 2.1 / 1.8 / 1.6 / 1.0	185
	S10XP-250	Small Small Medium	2, 3 FT (4) 5	ED28 T15 ED28	s10p25(*).ies s10p254.ies s10p255.ies	CWA	M138 / M153	2.8 / 1.5 / 1.3 / 1.2 / 0.6	298
	S10XP-320	Medium	2, 3, FT (4), 5	ED28	s10p32(*).ies	CWA	M132 / M154	3.3 / 1.9 / 1.7 / 1.4 / 0.8	368
	S10XP-400	Medium Medium	2, 3 FT (4), 5	ED / BT37 ED28	s10p40(*).ies s10p40(*).ies	CWA	M135 / M155	4.0 / 2.2 / 1.9 / 1.8 / 1.0	456
	S10XP-750	Large	FT (4)	ED / BT37	s10p754.ies	CWA	M149	7.0 / 4.0 / 3.5 / 3.0 / 1.7	820
	S10XP-875	Large Large	3 FT (4)	ED / BT37 ED / BT37	s10p873.ies s10p874.ies	CWA	M166	7.8 / 4.3 / 3.9 / 3.4 / 2.0	945
	S10XP-1000	Large Large	3 FT (4)	ED / BT37 ED / BT37	s10p1003.ies s10p1004.ies	CWA	M141	9.0 / 5.2 / 4.5 / 3.9 / 2.4	1080
HPS	S10XS-150	Small Small Medium	2, 3 FT (4) 5	E23½ E23½ E23½	s10s15(*).ies s10s154.ies s10s155.ies	HX-HPF	S55	3.2 / 1.7 / 1.6 / 1.4 / 0.7	195
	S10XS-250	Small Medium	2, 3, FT (4) 5	E18 ED28	s10s25(*).ies s10s255.ies	CWA	S50	2.7 / 1.6 / 1.3 / 1.2 / 0.7	310
	S10XS-400	Medium	2, 3, FT (4), 5	E18	s10s40(*).ies	CWA	S51	4.1 / 2.5 / 2.1 / 1.9 / 1.1	467
	S10XS-750	Large	3, FT (4)	ED / BT37	s10s75(*).ies	CWA	S111	6.8 / 4.0 / 3.5 / 3.1 / 1.8	840
	S10XS-1000	Large	3, FT (4)	E25	s10s100(*).ies	CWA	S52	9.5 / 5.5 / 4.8 / 4.2 / 2.5	1100

Notes:

- Accommodates a variety of other wattages and lamps. Consult factory with specific requirements.
- MH = Metal Halide, PS = Pulse Start Metal Halide, HPS = High Pressure Sodium. Clear lamps are recommended for optimum uniformity.
- Replace (*) with Reflector Type: 2, 3, 4 (for FT), or 5.
- CWA = Constant Wattage Autotransformer, HX-HPF = High Reactance High Power Factor.

S10X Series

Spectra Ten-X Area Luminaire, 150-1000W HID

Type:	Job:	Page 4 of 6
-------	------	-------------

Option details (Factory Installed)

BL Bi-Level switching ballast

Note: Suitable for HPS in any aiming position.

Consult factory when specifying dimming with Metal Halide.

Bi-Level provides high/low level of lamp output with up to 50% power consumption. Zero crossover network avoids strobing and lamp dropout.

Not available with HX-HPF ballasts.



Auxiliary / Emergency Lighting (150 watt quartz lamp, standard)

Combined quartz wattage may not exceed HID lamp wattage. 120V double contact bayonet base.

CSR Hot Quartz Restrike using Current Sensing Relay (without time delay)



Extinguishes auxiliary quartz lamp when arc of the main HID lamp strikes.

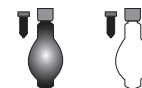
Activation: At (initial) Cold Start or Restrike (after a momentary "Brown Out" or extended "Black Out" power interruption), through Run Down.

CSR Auxiliary Quartz Operation



Normal Start:

Quartz lamp energized until main HID lamp strikes.



HID Lamp Reaches Full Brightness:

Auxiliary quartz lamp automatically extinguished when main HID lamp strikes. (Takes approximately 3 minutes to reach approx. 40% brightness.)

LQ LiteMatic Hot / Cold Quartz Restrike



Provides LiteMatic quartz auxiliary operation for fixtures with 120V or multi-tap ballasts. 120V auxiliary LiteMatic quartz lamp power supplied by ballast (AC line voltage). Quartz lamp remains on for three minutes after main HID lamp strikes and reaches approximately 40% light output.

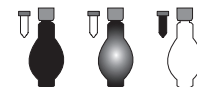
Activation: At (initial) Cold Start or Restrike (after a momentary "Brown Out" or extended "Black Out" power interruption), through Run Down, Restrike and Ramp Up.

LQ Auxiliary LiteMatic Quartz Operation



Normal Start:

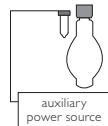
Quartz lamp energized at initial cold start or at restrike after a temporary power interruption.



Quartz Lamp Remains on during Ramp Up:

Besides providing illumination while the main HID lamp reaches full brightness, the warmth provided by the quartz lamp helps to create a favorable restrike condition for the main HID lamp (useful in extreme cold temperatures).

LQ1 Separately Wired (120V) Hot / Cold Quartz Restrike



Externally controlled emergency lighting from a separate power source. Quartz lamp is extinguished once power is restored.

To ensure integrity of the emergency lighting system, LQ1 leads should be hardwired.

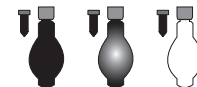
Activation: At "Black Out" conditions only. Normal HID operation will occur at all other times.

LQ1 Emergency Quartz Operation



At AC Power Interruption:

During AC line voltage power interruption, auxiliary quartz lamp is automatically energized by separately wired power source.



Once Power is Restored, Quartz Lamp Automatically Extinguishes:

Used specifically for emergency lighting during "Black Out" periods, or times of extended power interruption. (Takes approximately 3 minutes for HID lamp to reach full brightness.)

LQ1 requires an interlock by others to ensure HID and quartz source are not operated together.

Ballast Fusing

Voltage must be specified with QV ballast.

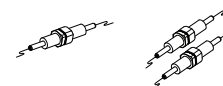
F1

Single Fuse, 120 / 277V

F2

Double Fuse, 208 / 240 / 480V

Standard unit consists of 1 or 2 KTK 30 amp fuses mounted internally on the ballast plate.



Photocontrol

480V not available.

TLR

Twist Lock Photocell Receptacle

Factory installed.

TLR-PC120V

Twist Lock Receptacle with 120V Photocell

TLR-PC208V

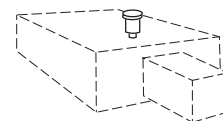
Twist Lock Receptacle with 208V Photocell

TLR-PC240V

Twist Lock Receptacle with 240V Photocell

TLR-PC277V

Twist Lock Receptacle with 277V Photocell



Glare Shield

HSS

House Side Shield (external)

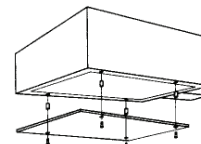
Factory installed.

Auxiliary Lens

AL-4-S10

Auxiliary Polycarbonate Lens

Factory installed.



50HZ

50 Hz ballast operation
Consult factory.

Specified for applications (outside the U.S.) where 50 Hertz operation is standard.

Philips Wide-Lite reserves the right to change specifications and dimensions without notice. Lamp and electrical specifications / availability subject to change by manufacturer without notice. Please refer to detailed specification sheets for additional information and spec details.

1611 Clovis Barker Road • San Marcos, TX 78666 • Phone: 512.392.5821 • Fax: 512.753.1122 • www.wide-lite.com

© 2010 Philips Group. All rights reserved.

Bulletin No. WLSP0160G0711

PHILIPS
WideLite

S10X Series

Spectra Ten-X Area Luminaire, 150-1000W HID

Type:	Job:	Page 5 of 6
-------	------	-------------

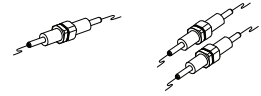
Accessory details (Field Installed - Shipped Separately)

Ballast Fusing

F1-KIT Single Fuse Kit (120 / 277V)

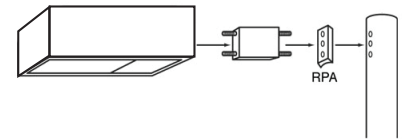
F2-KIT Double Fuse Kit (208 / 240 / 480V)

Kit consists of 1 or 2 fuseholders and 1 or 2 KTK 30K fuses for field installation on wiring access plate.



Mounting Accessories

RPA-S10 Round Pole Adapter allows arm mounting to 4" O.D. round poles with plain cut tops or with RPTA accessory



RPTA-190-S10 Round Pole Tenon Adapter for mounting one (1) fixture at 90° (requires 1 RPA).

RPTA-290-S10 Round Pole Tenon Adapter for mounting two (2) fixtures at 90° (requires 2 RPA).

RPTA-2180-S10 Round Pole Tenon Adapter for mounting two (2) fixtures at 180° (requires 2 RPA).

RPTA-390-S10 Round Pole Tenon Adapter for mounting three (3) fixtures at 90° (requires 3 RPA).

RPTA-3120-S10 Round Pole Tenon Adapter for mounting three (3) fixtures at 120° (requires 3 RPA).

RPTA-490-S10 Round Pole Tenon Adapter for mounting four (3) fixtures at 90° (requires 4 RPA).

Allows mounting of standard "S" arm to round pole with 2-3/8" O.D. x 4-1/2" pole top tenon. Requires RPAs.



SPTA-190-S10 Square Pole Tenon Adapter for mounting one (1) fixture at 90°.

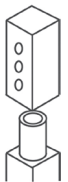
SPTA-290-S10 Square Pole Tenon Adapter for mounting two (2) fixtures at 90°.

SPTA-2180-S10 Square Pole Tenon Adapter for mounting two (2) fixtures at 180°.

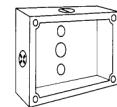
SPTA-390-S10 Square Pole Tenon Adapter for mounting three (3) fixtures at 90°.

SPTA-490-S10 Square Pole Tenon Adapter for mounting four (3) fixtures at 90°.

Allows mounting of standard "S" arm to square pole with 2-3/8" O.D. x 4-1/2" pole top tenon.



SW-DT4 Wall mount bracket for use with surface arms.



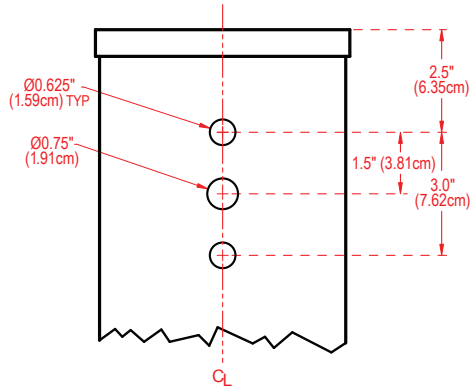
S10X Series

Spectra Ten-X Area Luminaire, 150-1000W HID

Type:	Job:	Page 6 of 6
-------	------	-------------

Notes

Drill Template No. 4 (NTS)



S Arm Mount

for 4" - 6" Square Pole or 4" - 5" Round Pole
(also for S11 (longer arm mount))

